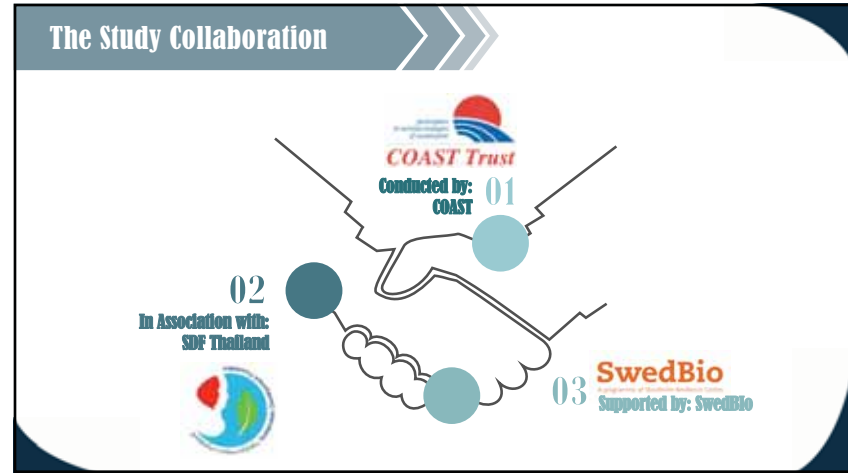
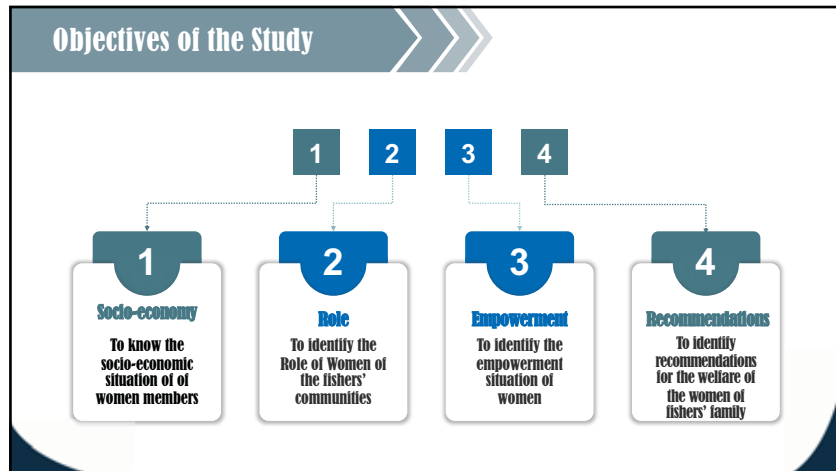




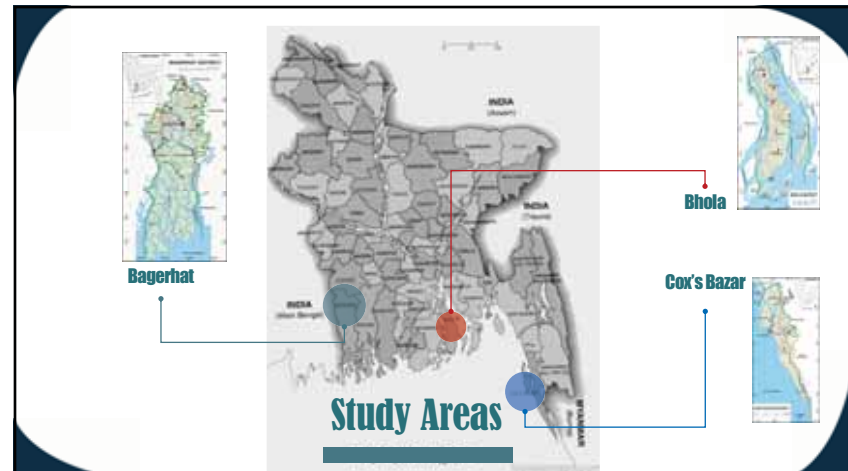
1



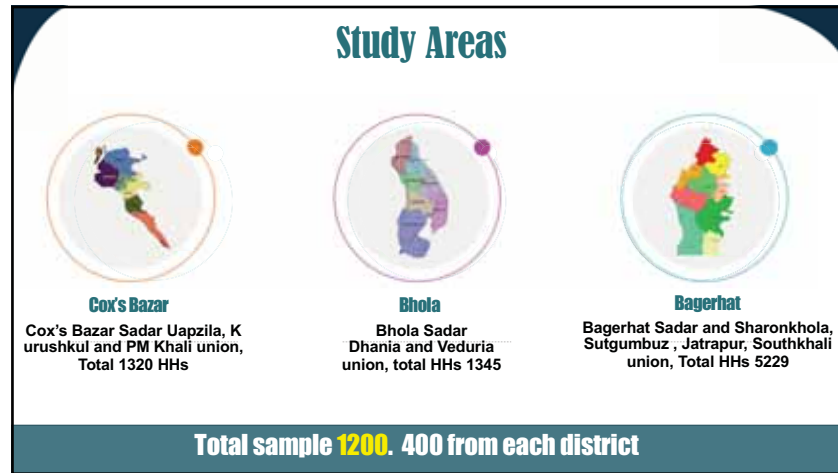
2



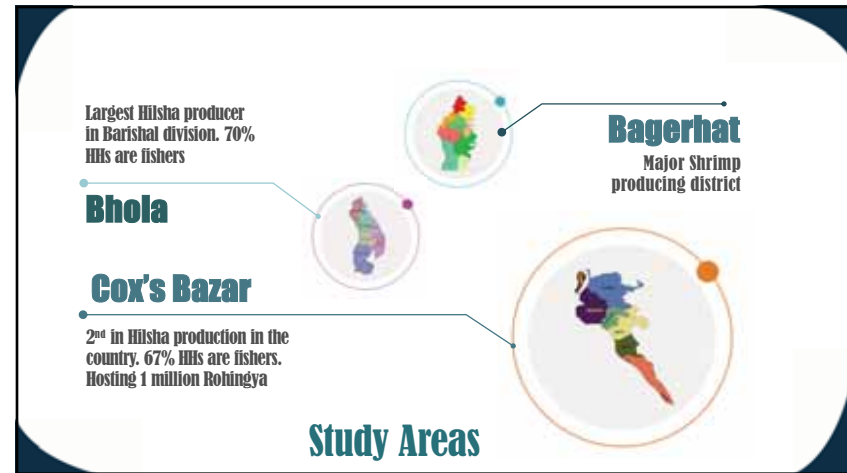
3



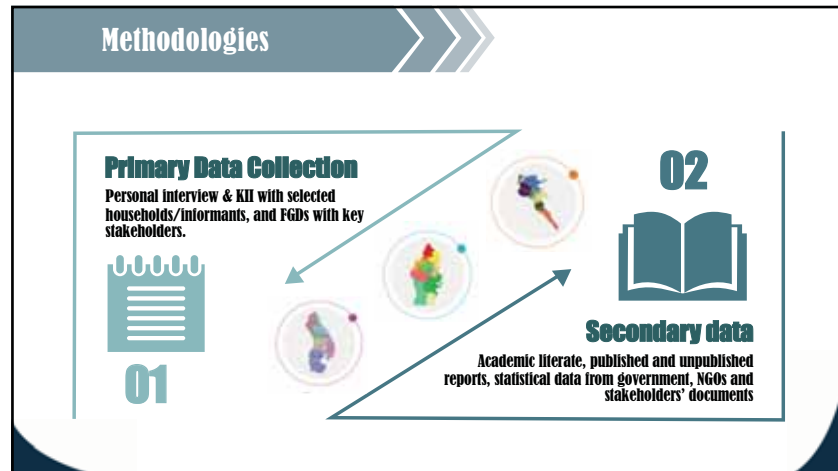
4



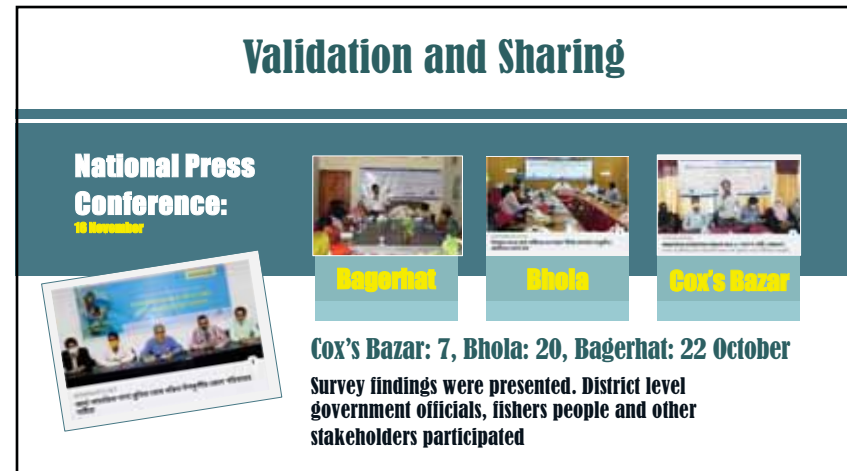
5



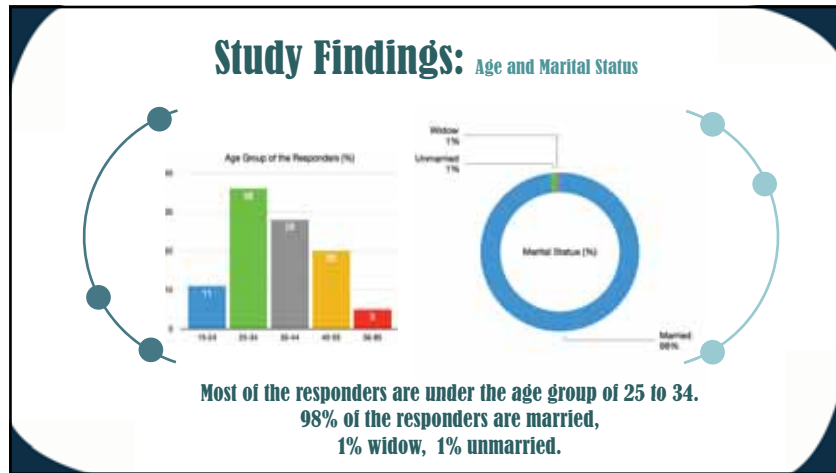
6



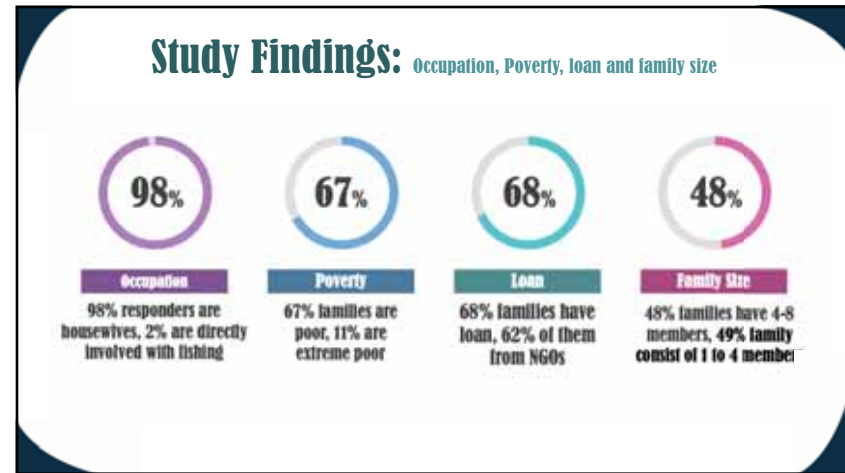
7



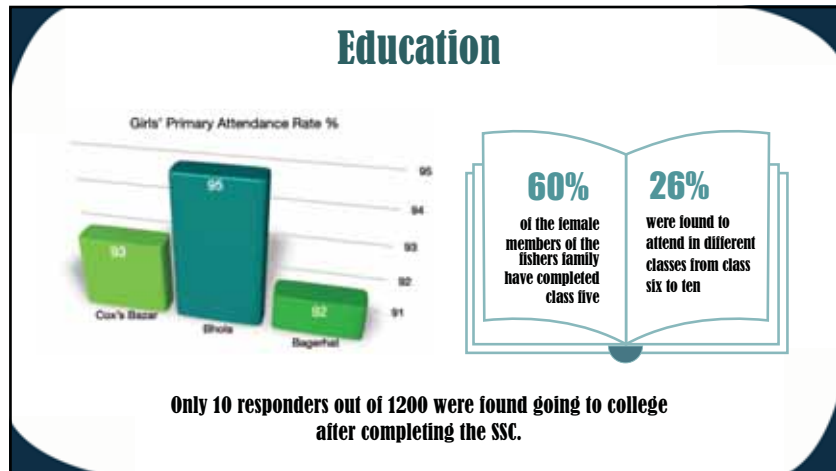
8



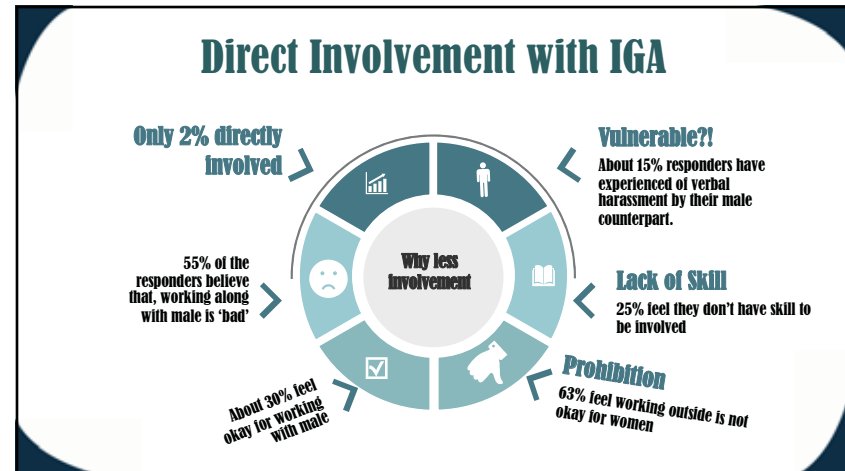
9



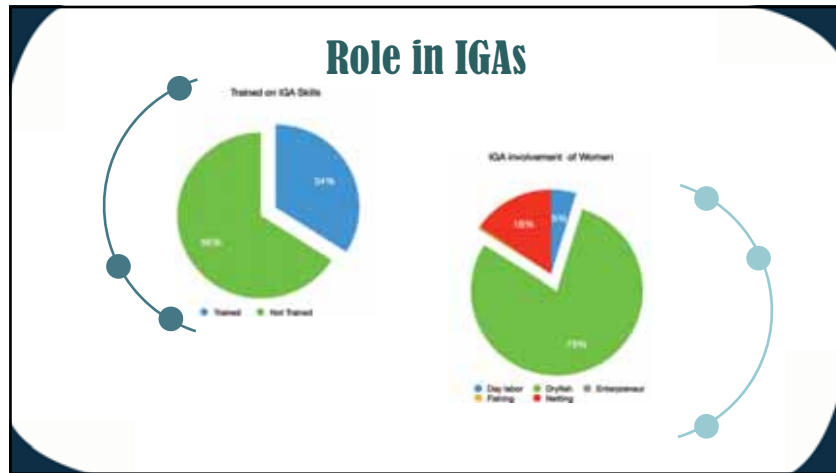
10



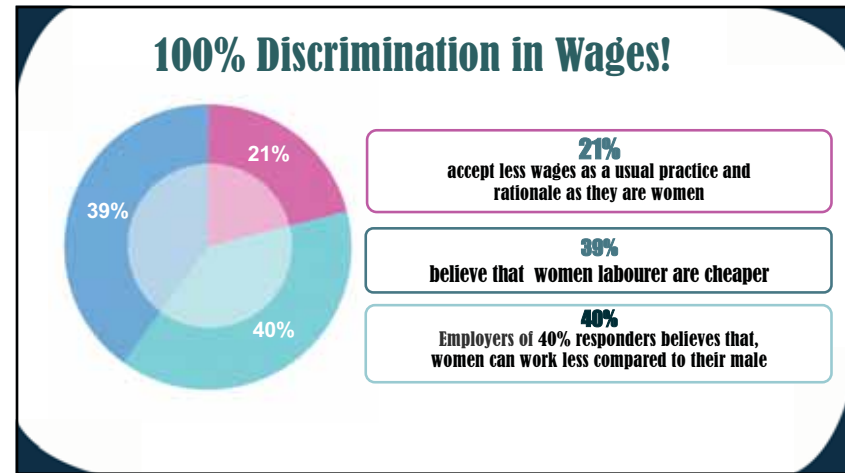
11



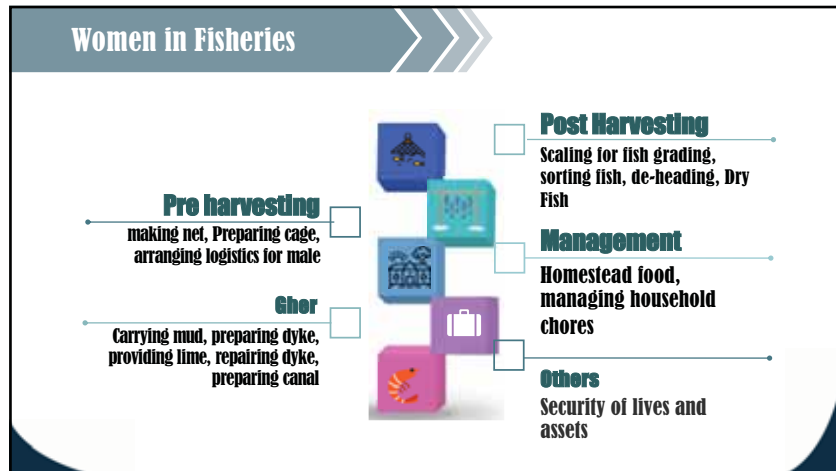
12



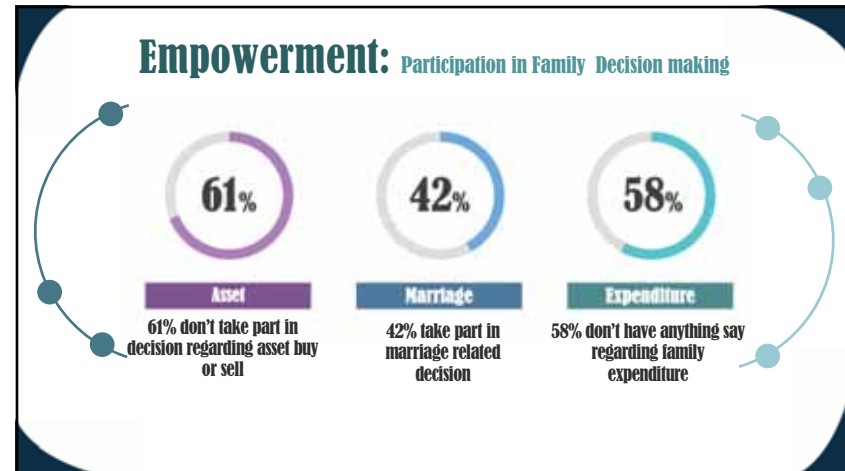
13



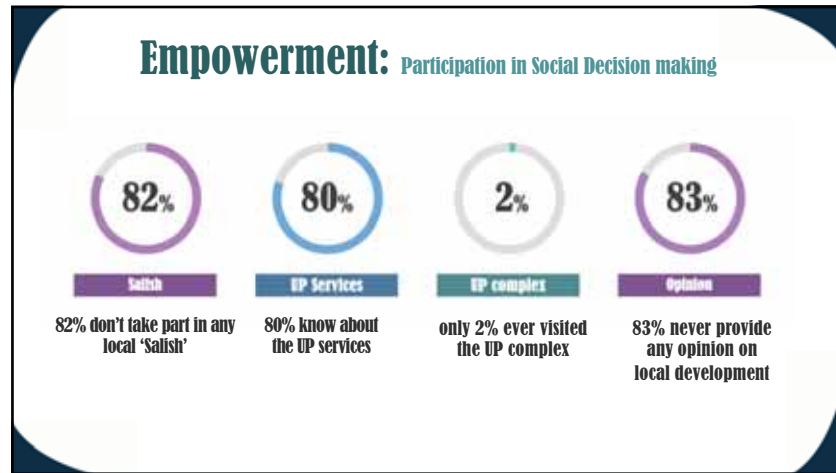
14



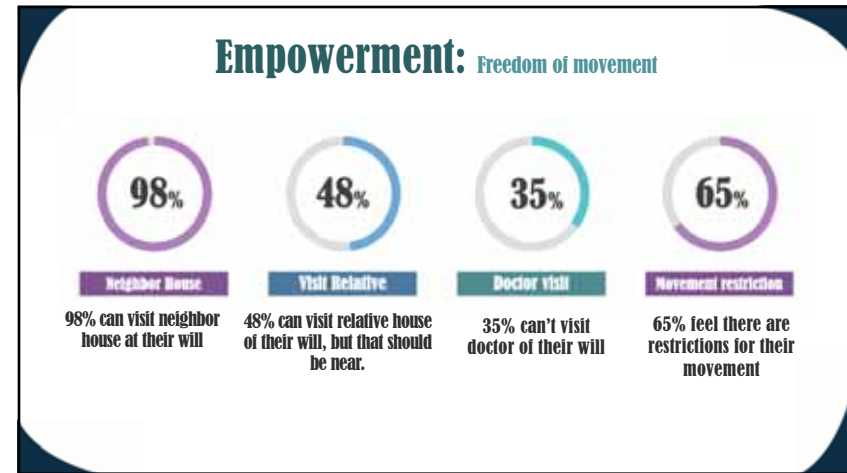
15



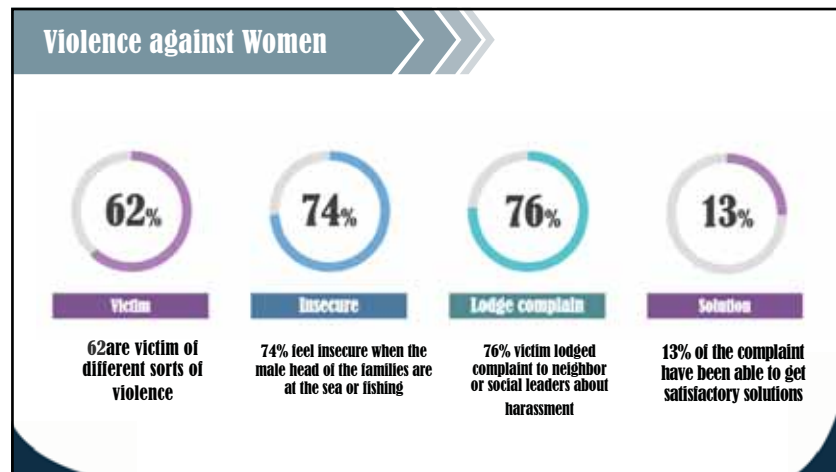
16



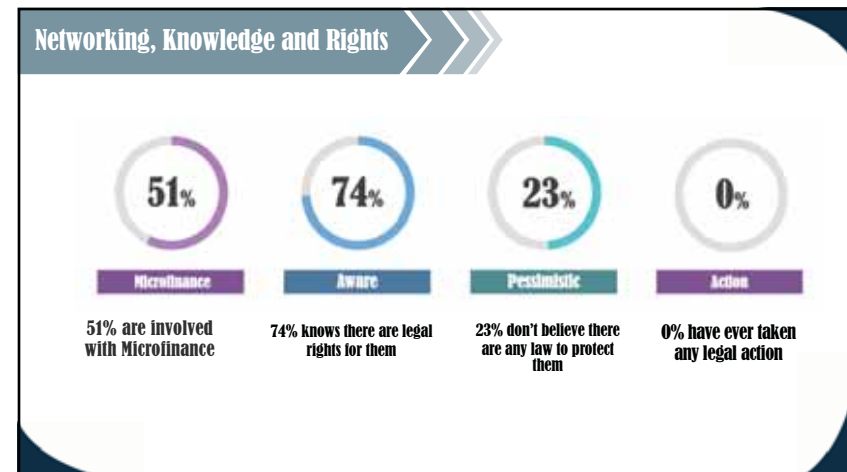
17



18



19



20

Major Recommendations

- Special policies and actions to identify women contributions
- Involve women in economic activities
- Ensure women's participation in various fisheries programs
- Implementation of labor policies for fishermen



21

Women Participation is must for Sustainable Marine Fisheries

Thank you

Your opinion is much appreciated !



22