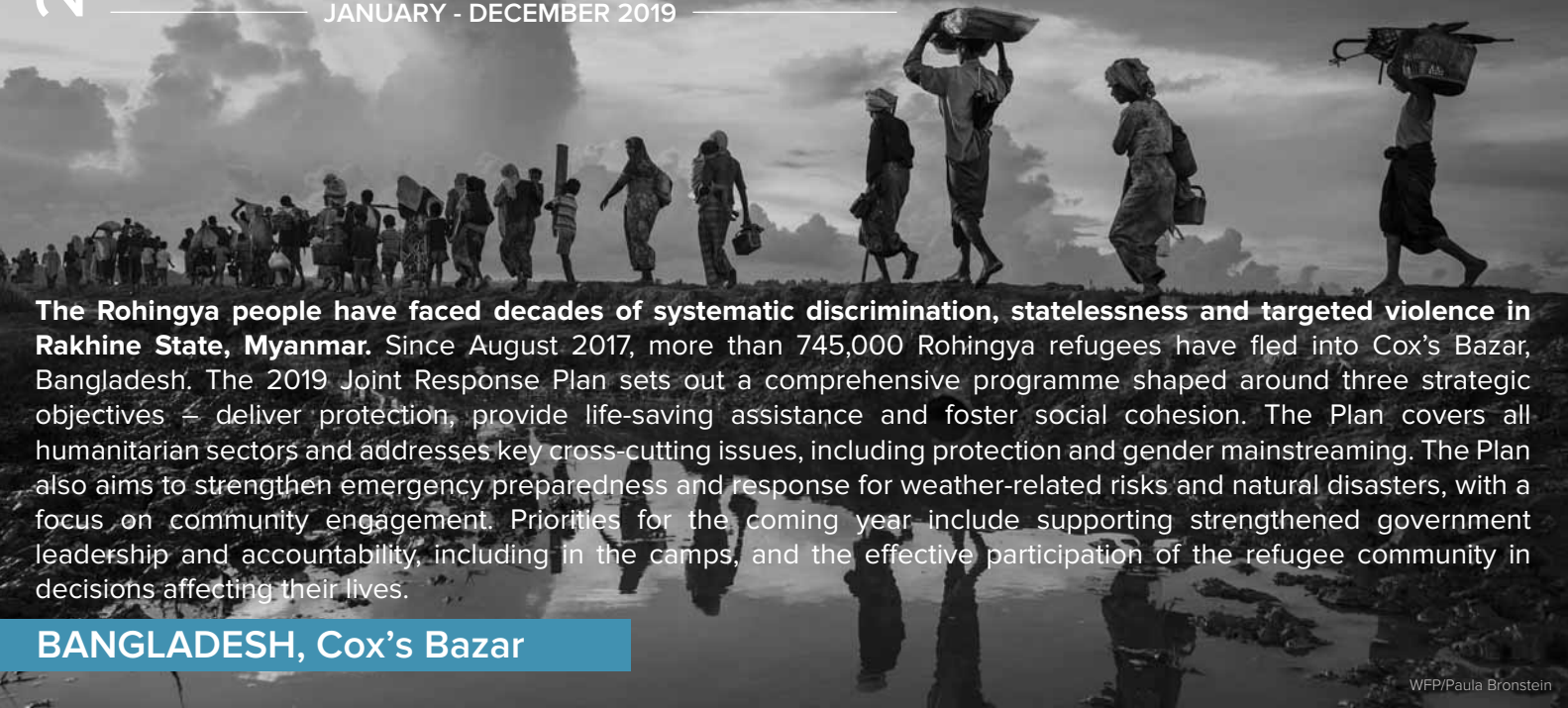


2019 JRP FOR ROHINGYA HUMANITARIAN CRISIS

JANUARY - DECEMBER 2019

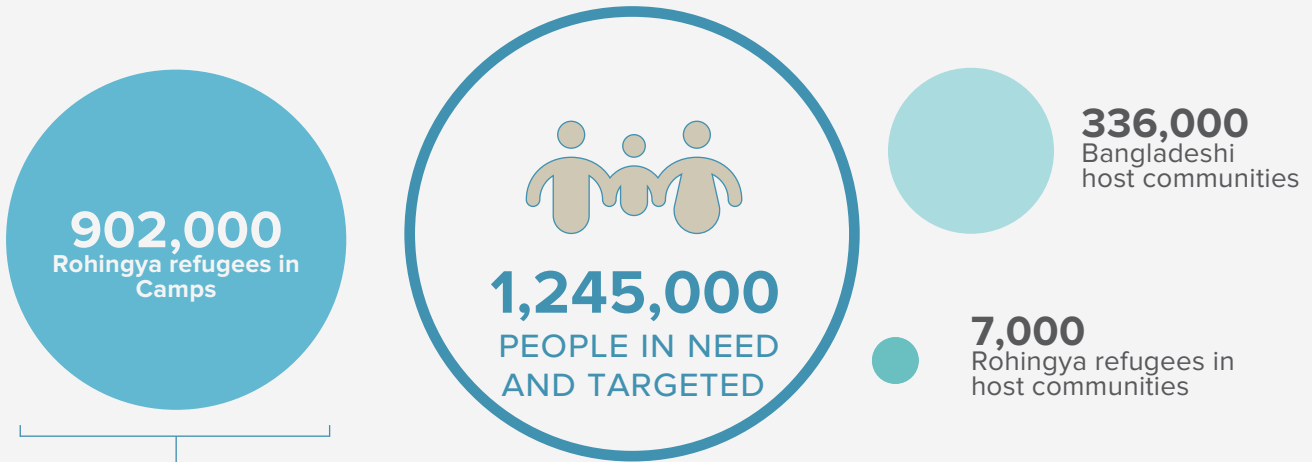


WFP/Paula Bronstein

The Rohingya people have faced decades of systematic discrimination, statelessness and targeted violence in Rakhine State, Myanmar. Since August 2017, more than 745,000 Rohingya refugees have fled into Cox's Bazar, Bangladesh. The 2019 Joint Response Plan sets out a comprehensive programme shaped around three strategic objectives – deliver protection, provide life-saving assistance and foster social cohesion. The Plan covers all humanitarian sectors and addresses key cross-cutting issues, including protection and gender mainstreaming. The Plan also aims to strengthen emergency preparedness and response for weather-related risks and natural disasters, with a focus on community engagement. Priorities for the coming year include supporting strengthened government leadership and accountability, including in the camps, and the effective participation of the refugee community in decisions affecting their lives.

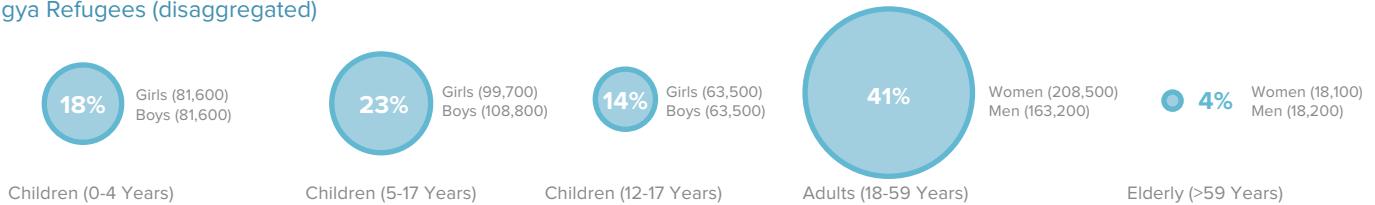
BANGLADESH, Cox's Bazar

TOTAL PEOPLE IN NEED



Population figures as of 31 December 2018

Rohingya Refugees (disaggregated)



2019 STRATEGIC OBJECTIVES



SO 1. Collectively deliver protection to refugee women, men, girls and boys

Empower individuals and communities, and ensure that all aspects of the response contribute to an enabling environment for the rights and well-being of affected



SO 2. Provide life-saving assistance to affected populations

Improve quality and rationalize services to ensure equal access for women, men, boys and girls, mainstream disaster risk reduction and ensure preparedness for



SO 3. Foster social cohesion

Stabilize and sustain the response in close collaboration with the Government of Bangladesh, by ensuring access to quality services for affected populations including host communities, building resilience and



USD 920.5 Million

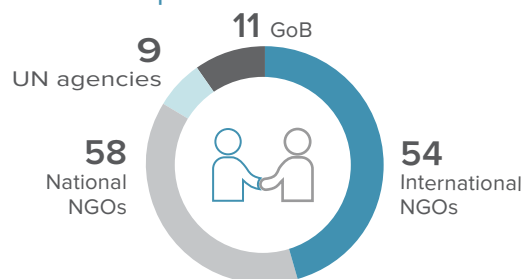
required in 2019 in order to maintain priority response efforts.

Number of Projects



166 JRP Projects

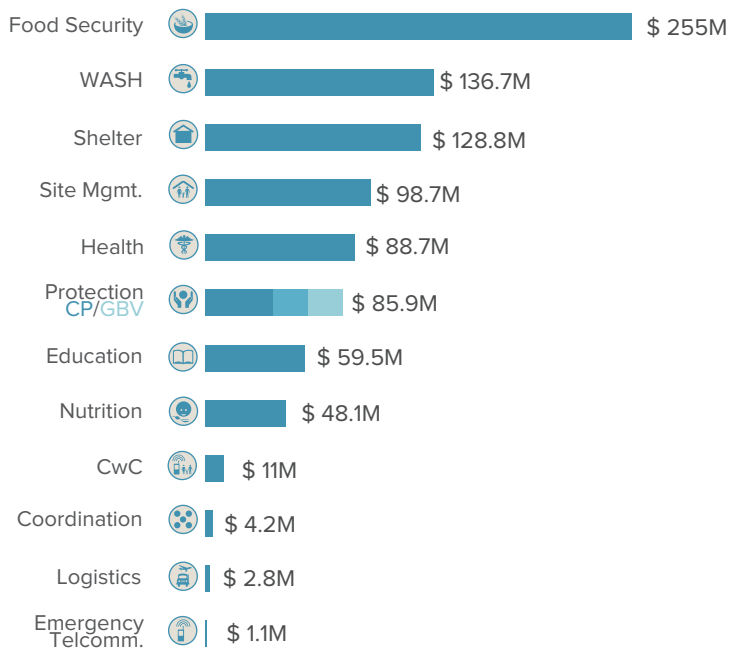
JRP partners breakdown



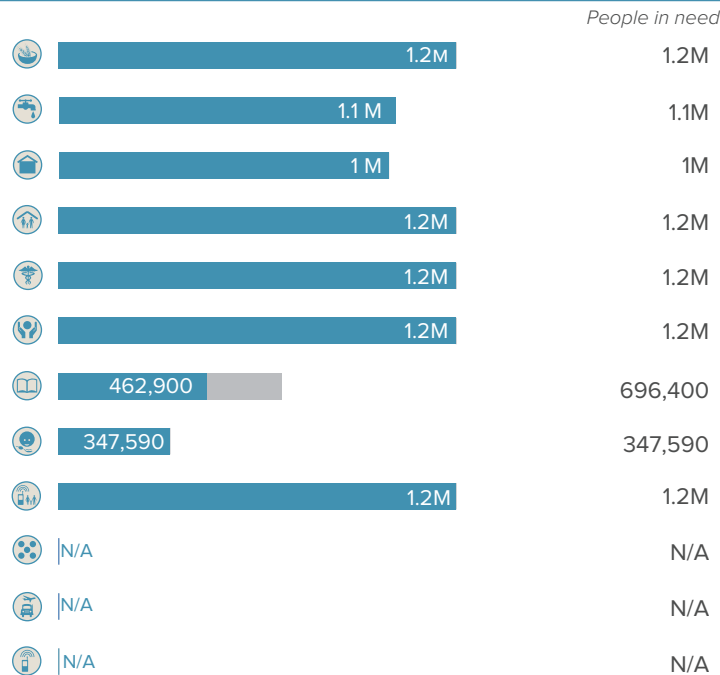
132 JRP Partners

*Including implementing partners

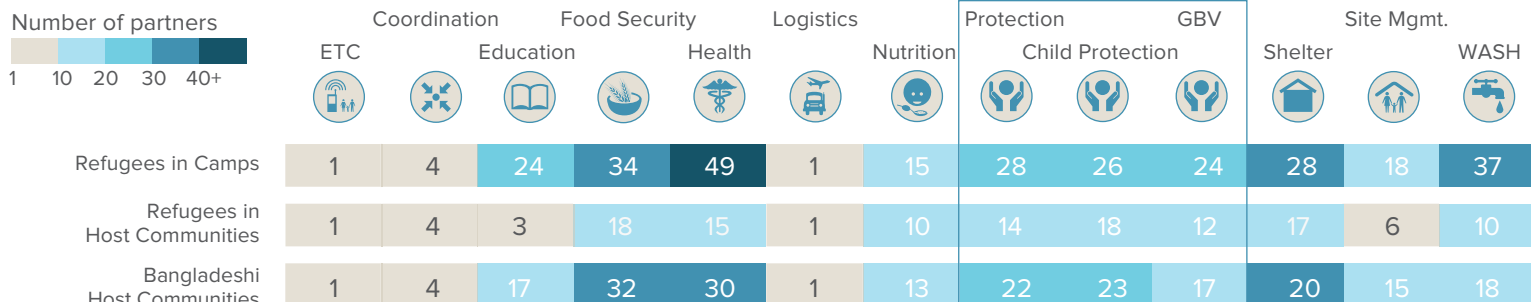
FINANCIAL REQUIREMENT BY SECTOR



PEOPLE TARGETED VS IN NEED



NUMBER OF PARTNERS BY SECTOR



*Including implementing partners

PARTNERS ENGAGED WITH THE INTER SECTOR COORDINATION GROUP (ISCG)

AAB	BITA	CWW	FH	Int.RC	MoH	Prantic	SARPV	VERC
AAN	BNWLA	Dalit	FIVDB	Internews	MoHFW	Protyyashi	SCI	WaterAid
AB	BRAC	DAM	Friendship	IOM	MoSW	PUI	SHED	WCDO
ACF	CA	DCA	GAA	IPAS	MTI	PULSE	Shushilan	WFP
ACTED	CARE	DCHT	GK	IRC	Mukti	PWJ	SI	WHH
ADRA	Caritas	DoAE	GlobalOne	IUCN	NCA	QC	SWB	WHO
AF	CBM	DoE	GUK	JCF	NGOF	REACH	TAI	WMI
AfA	CCNF	DoF	HAEFA	JHUCCP	NRC	RF	TdH	YPSA
Agrajatra	CDD	DPHE	HEKS	LHB	OBAT	RHU	TWB	
Anando	CIS	DRC	HelpAge	MC	Oxfam	RI	UNDP	
BBC MA	CNRS	DSK	HF	MDMF	PA	RIC	UNFPA	
BC	COAST	DWW	HI	Medair	PHALS	RISDA	UNHCR	
BDRCS	CODEC	FAO	HSI	MM	PHD	RTM	UNICEF	
BEP	CPI	EGA	ICCO	MoDMP	PHD	RAB	UNWOMEN	